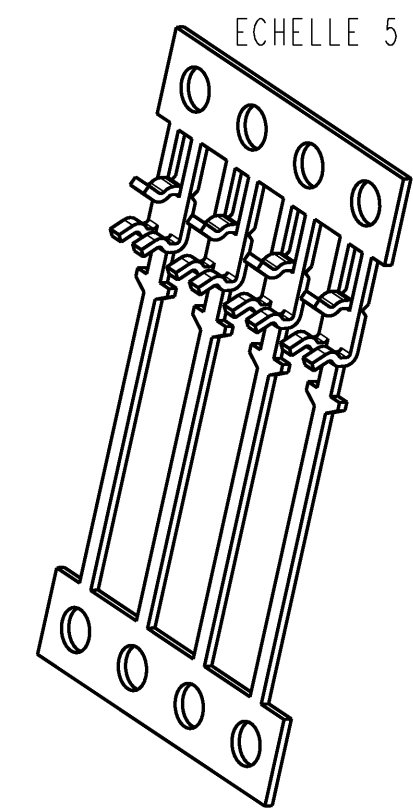
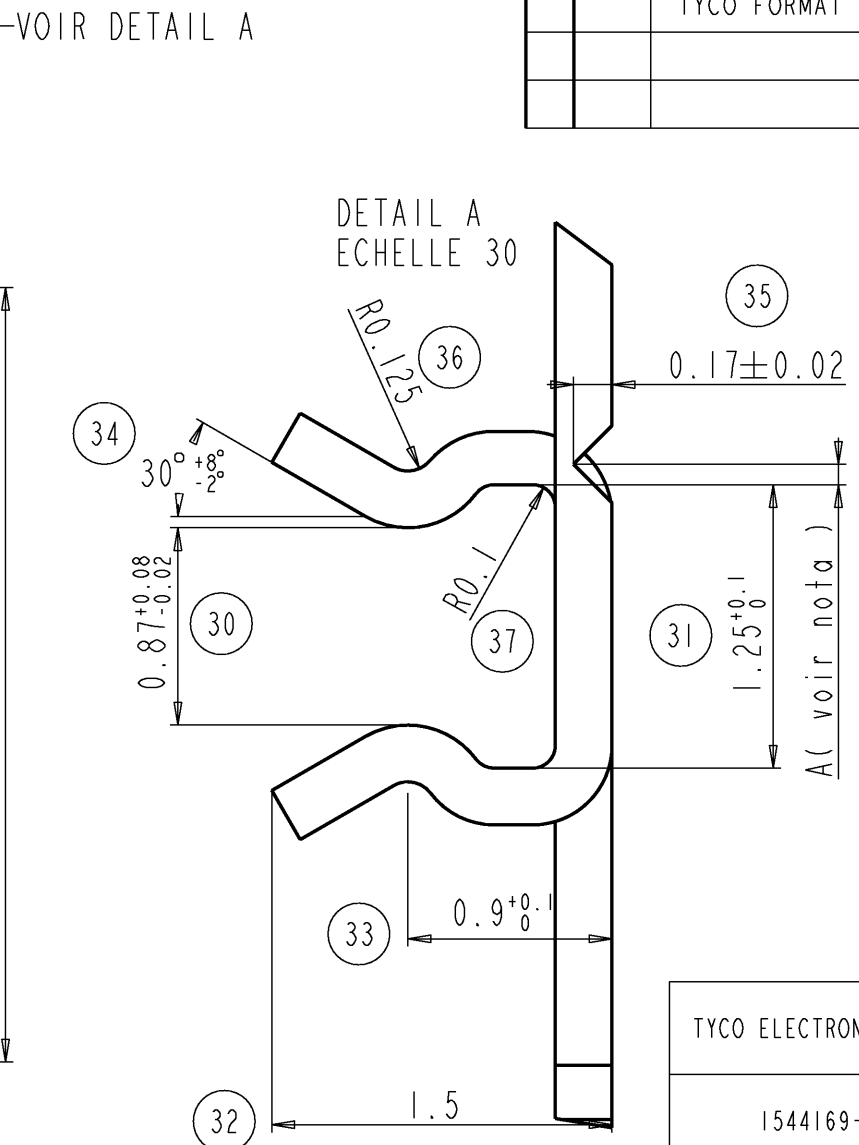
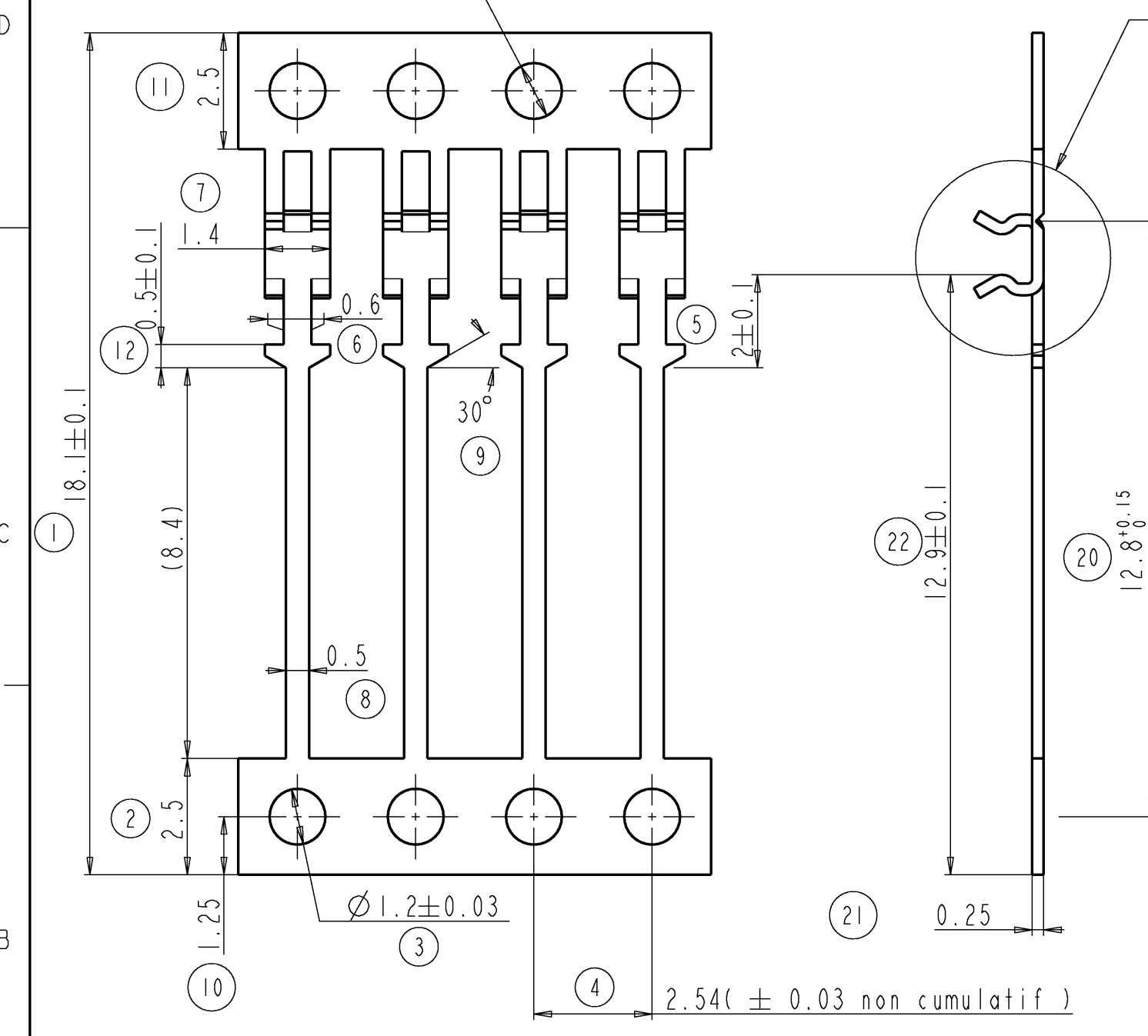


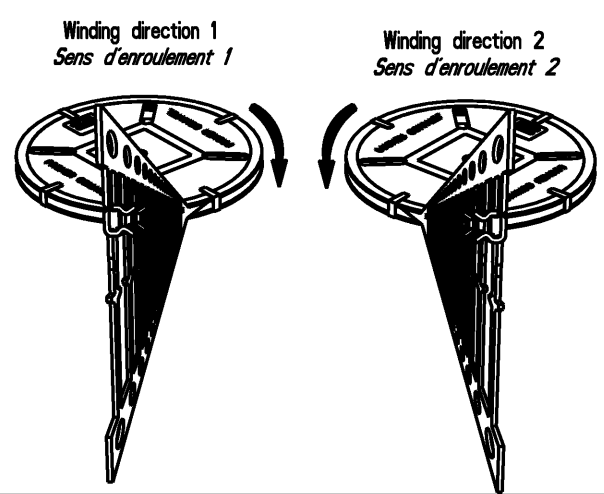
THIS DRAWING IS UNPUBLISHED. RELEASED FOR PUBLICATION 2008
 © COPYRIGHT 2008 BY TYCO ELECTRONICS CORPORATION. ALL RIGHTS RESERVED.

LOC	DIST	REVISIONS			
P	LTR	DESCRIPTION	DATE	DWN	APVD
F	00	F	DRAFTING DETAIL UPDATE	02DEC2008	LCi JD r
			TYCO FORMAT COMPLIANCE		



TYCO ELECTRONICS PN	PLATING	WINDING DIRECTION
1544169-1	BEFORE STAMPING Sn : 112-16-4 (3 à 7µ)	1
1544169-2	AFTER STAMPING Ni : 112-25-3 (1.27 à 3µ) Sn : 112-65-1 (3 à 5 µ)	1
1544169-3	BEFORE STAMPING Sn : 112-16-4 (3 à 7µ)	2
1544169-4	AFTER STAMPING Ni : 112-25-3 (1.27 à 3µ) Sn : 112-65-1 (3 à 5 µ)	2

Nota : A, dans tous les cas, l'axe de l'amorce de casse doit être extérieur au fond de pince
 - Volume par contact : 5.32 mm³



THIS DRAWING IS A CONTROLLED DOCUMENT FOR TYCO ELECTRONICS CORPORATION IT IS SUBJECT TO CHANGE AND THE CONTROLLING ENGINEERING ORGANIZATION SHOULD BE CONTACTED FOR THE LATEST REVISION.		DWN L. CORONELLI 02DEC2008	Tyco Electronics Tyco Electronics France SAS RN 90, 38530 Chapareillan																																																																																																																																																																																																																																																																																																															
DIMENSIONS: mm		CHK P. FLORES 02DEC2008	NAME																																																																																																																																																																																																																																																																																																															
TOLERANCES UNLESS OTHERWISE SPECIFIED:		APVD J. DAHER 02DEC2008	CONTACT A SOUDER DIL																																																																																																																																																																																																																																																																																																															
<table border="1"> <tr><td>1</td><td>PLC</td><td>±</td></tr> <tr><td>2</td><td>PVC</td><td>±</td></tr> <tr><td>3</td><td>PLC</td><td>±0.05</td></tr> <tr><td>4</td><td>PVC</td><td>±</td></tr> <tr><td>5</td><td>PLC</td><td>±</td></tr> <tr><td>6</td><td>PVC</td><td>±</td></tr> <tr><td>7</td><td>PLC</td><td>±</td></tr> <tr><td>8</td><td>PVC</td><td>±</td></tr> <tr><td>9</td><td>PLC</td><td>±</td></tr> <tr><td>10</td><td>PVC</td><td>±</td></tr> <tr><td>11</td><td>PLC</td><td>±</td></tr> <tr><td>12</td><td>PVC</td><td>±</td></tr> <tr><td>13</td><td>PLC</td><td>±</td></tr> <tr><td>14</td><td>PVC</td><td>±</td></tr> <tr><td>15</td><td>PLC</td><td>±</td></tr> <tr><td>16</td><td>PVC</td><td>±</td></tr> <tr><td>17</td><td>PLC</td><td>±</td></tr> <tr><td>18</td><td>PVC</td><td>±</td></tr> <tr><td>19</td><td>PLC</td><td>±</td></tr> <tr><td>20</td><td>PVC</td><td>±</td></tr> <tr><td>21</td><td>PLC</td><td>±</td></tr> <tr><td>22</td><td>PVC</td><td>±</td></tr> <tr><td>23</td><td>PLC</td><td>±</td></tr> <tr><td>24</td><td>PVC</td><td>±</td></tr> <tr><td>25</td><td>PLC</td><td>±</td></tr> <tr><td>26</td><td>PVC</td><td>±</td></tr> <tr><td>27</td><td>PLC</td><td>±</td></tr> <tr><td>28</td><td>PVC</td><td>±</td></tr> <tr><td>29</td><td>PLC</td><td>±</td></tr> <tr><td>30</td><td>PVC</td><td>±</td></tr> <tr><td>31</td><td>PLC</td><td>±</td></tr> <tr><td>32</td><td>PVC</td><td>±</td></tr> <tr><td>33</td><td>PLC</td><td>±</td></tr> <tr><td>34</td><td>PVC</td><td>±</td></tr> <tr><td>35</td><td>PLC</td><td>±</td></tr> <tr><td>36</td><td>PVC</td><td>±</td></tr> <tr><td>37</td><td>PLC</td><td>±</td></tr> <tr><td>38</td><td>PVC</td><td>±</td></tr> <tr><td>39</td><td>PLC</td><td>±</td></tr> <tr><td>40</td><td>PVC</td><td>±</td></tr> <tr><td>41</td><td>PLC</td><td>±</td></tr> <tr><td>42</td><td>PVC</td><td>±</td></tr> <tr><td>43</td><td>PLC</td><td>±</td></tr> <tr><td>44</td><td>PVC</td><td>±</td></tr> <tr><td>45</td><td>PLC</td><td>±</td></tr> <tr><td>46</td><td>PVC</td><td>±</td></tr> <tr><td>47</td><td>PLC</td><td>±</td></tr> <tr><td>48</td><td>PVC</td><td>±</td></tr> <tr><td>49</td><td>PLC</td><td>±</td></tr> <tr><td>50</td><td>PVC</td><td>±</td></tr> <tr><td>51</td><td>PLC</td><td>±</td></tr> <tr><td>52</td><td>PVC</td><td>±</td></tr> <tr><td>53</td><td>PLC</td><td>±</td></tr> <tr><td>54</td><td>PVC</td><td>±</td></tr> <tr><td>55</td><td>PLC</td><td>±</td></tr> <tr><td>56</td><td>PVC</td><td>±</td></tr> <tr><td>57</td><td>PLC</td><td>±</td></tr> <tr><td>58</td><td>PVC</td><td>±</td></tr> <tr><td>59</td><td>PLC</td><td>±</td></tr> <tr><td>60</td><td>PVC</td><td>±</td></tr> <tr><td>61</td><td>PLC</td><td>±</td></tr> <tr><td>62</td><td>PVC</td><td>±</td></tr> <tr><td>63</td><td>PLC</td><td>±</td></tr> <tr><td>64</td><td>PVC</td><td>±</td></tr> <tr><td>65</td><td>PLC</td><td>±</td></tr> <tr><td>66</td><td>PVC</td><td>±</td></tr> <tr><td>67</td><td>PLC</td><td>±</td></tr> <tr><td>68</td><td>PVC</td><td>±</td></tr> <tr><td>69</td><td>PLC</td><td>±</td></tr> <tr><td>70</td><td>PVC</td><td>±</td></tr> <tr><td>71</td><td>PLC</td><td>±</td></tr> <tr><td>72</td><td>PVC</td><td>±</td></tr> <tr><td>73</td><td>PLC</td><td>±</td></tr> <tr><td>74</td><td>PVC</td><td>±</td></tr> <tr><td>75</td><td>PLC</td><td>±</td></tr> <tr><td>76</td><td>PVC</td><td>±</td></tr> <tr><td>77</td><td>PLC</td><td>±</td></tr> <tr><td>78</td><td>PVC</td><td>±</td></tr> <tr><td>79</td><td>PLC</td><td>±</td></tr> <tr><td>80</td><td>PVC</td><td>±</td></tr> <tr><td>81</td><td>PLC</td><td>±</td></tr> <tr><td>82</td><td>PVC</td><td>±</td></tr> <tr><td>83</td><td>PLC</td><td>±</td></tr> <tr><td>84</td><td>PVC</td><td>±</td></tr> <tr><td>85</td><td>PLC</td><td>±</td></tr> <tr><td>86</td><td>PVC</td><td>±</td></tr> <tr><td>87</td><td>PLC</td><td>±</td></tr> <tr><td>88</td><td>PVC</td><td>±</td></tr> <tr><td>89</td><td>PLC</td><td>±</td></tr> <tr><td>90</td><td>PVC</td><td>±</td></tr> <tr><td>91</td><td>PLC</td><td>±</td></tr> <tr><td>92</td><td>PVC</td><td>±</td></tr> <tr><td>93</td><td>PLC</td><td>±</td></tr> <tr><td>94</td><td>PVC</td><td>±</td></tr> <tr><td>95</td><td>PLC</td><td>±</td></tr> <tr><td>96</td><td>PVC</td><td>±</td></tr> <tr><td>97</td><td>PLC</td><td>±</td></tr> <tr><td>98</td><td>PVC</td><td>±</td></tr> <tr><td>99</td><td>PLC</td><td>±</td></tr> <tr><td>100</td><td>PVC</td><td>±</td></tr> </table>		1	PLC	±	2	PVC	±	3	PLC	±0.05	4	PVC	±	5	PLC	±	6	PVC	±	7	PLC	±	8	PVC	±	9	PLC	±	10	PVC	±	11	PLC	±	12	PVC	±	13	PLC	±	14	PVC	±	15	PLC	±	16	PVC	±	17	PLC	±	18	PVC	±	19	PLC	±	20	PVC	±	21	PLC	±	22	PVC	±	23	PLC	±	24	PVC	±	25	PLC	±	26	PVC	±	27	PLC	±	28	PVC	±	29	PLC	±	30	PVC	±	31	PLC	±	32	PVC	±	33	PLC	±	34	PVC	±	35	PLC	±	36	PVC	±	37	PLC	±	38	PVC	±	39	PLC	±	40	PVC	±	41	PLC	±	42	PVC	±	43	PLC	±	44	PVC	±	45	PLC	±	46	PVC	±	47	PLC	±	48	PVC	±	49	PLC	±	50	PVC	±	51	PLC	±	52	PVC	±	53	PLC	±	54	PVC	±	55	PLC	±	56	PVC	±	57	PLC	±	58	PVC	±	59	PLC	±	60	PVC	±	61	PLC	±	62	PVC	±	63	PLC	±	64	PVC	±	65	PLC	±	66	PVC	±	67	PLC	±	68	PVC	±	69	PLC	±	70	PVC	±	71	PLC	±	72	PVC	±	73	PLC	±	74	PVC	±	75	PLC	±	76	PVC	±	77	PLC	±	78	PVC	±	79	PLC	±	80	PVC	±	81	PLC	±	82	PVC	±	83	PLC	±	84	PVC	±	85	PLC	±	86	PVC	±	87	PLC	±	88	PVC	±	89	PLC	±	90	PVC	±	91	PLC	±	92	PVC	±	93	PLC	±	94	PVC	±	95	PLC	±	96	PVC	±	97	PLC	±	98	PVC	±	99	PLC	±	100	PVC	±	PRODUCT SPEC -	SIZE A3	CAGE CODE 00779	DRAWING NO C-1544169	RESTRICTED TO -
1	PLC	±																																																																																																																																																																																																																																																																																																																
2	PVC	±																																																																																																																																																																																																																																																																																																																
3	PLC	±0.05																																																																																																																																																																																																																																																																																																																
4	PVC	±																																																																																																																																																																																																																																																																																																																
5	PLC	±																																																																																																																																																																																																																																																																																																																
6	PVC	±																																																																																																																																																																																																																																																																																																																
7	PLC	±																																																																																																																																																																																																																																																																																																																
8	PVC	±																																																																																																																																																																																																																																																																																																																
9	PLC	±																																																																																																																																																																																																																																																																																																																
10	PVC	±																																																																																																																																																																																																																																																																																																																
11	PLC	±																																																																																																																																																																																																																																																																																																																
12	PVC	±																																																																																																																																																																																																																																																																																																																
13	PLC	±																																																																																																																																																																																																																																																																																																																
14	PVC	±																																																																																																																																																																																																																																																																																																																
15	PLC	±																																																																																																																																																																																																																																																																																																																
16	PVC	±																																																																																																																																																																																																																																																																																																																
17	PLC	±																																																																																																																																																																																																																																																																																																																
18	PVC	±																																																																																																																																																																																																																																																																																																																
19	PLC	±																																																																																																																																																																																																																																																																																																																
20	PVC	±																																																																																																																																																																																																																																																																																																																
21	PLC	±																																																																																																																																																																																																																																																																																																																
22	PVC	±																																																																																																																																																																																																																																																																																																																
23	PLC	±																																																																																																																																																																																																																																																																																																																
24	PVC	±																																																																																																																																																																																																																																																																																																																
25	PLC	±																																																																																																																																																																																																																																																																																																																
26	PVC	±																																																																																																																																																																																																																																																																																																																
27	PLC	±																																																																																																																																																																																																																																																																																																																
28	PVC	±																																																																																																																																																																																																																																																																																																																
29	PLC	±																																																																																																																																																																																																																																																																																																																
30	PVC	±																																																																																																																																																																																																																																																																																																																
31	PLC	±																																																																																																																																																																																																																																																																																																																
32	PVC	±																																																																																																																																																																																																																																																																																																																
33	PLC	±																																																																																																																																																																																																																																																																																																																
34	PVC	±																																																																																																																																																																																																																																																																																																																
35	PLC	±																																																																																																																																																																																																																																																																																																																
36	PVC	±																																																																																																																																																																																																																																																																																																																
37	PLC	±																																																																																																																																																																																																																																																																																																																
38	PVC	±																																																																																																																																																																																																																																																																																																																
39	PLC	±																																																																																																																																																																																																																																																																																																																
40	PVC	±																																																																																																																																																																																																																																																																																																																
41	PLC	±																																																																																																																																																																																																																																																																																																																
42	PVC	±																																																																																																																																																																																																																																																																																																																
43	PLC	±																																																																																																																																																																																																																																																																																																																
44	PVC	±																																																																																																																																																																																																																																																																																																																
45	PLC	±																																																																																																																																																																																																																																																																																																																
46	PVC	±																																																																																																																																																																																																																																																																																																																
47	PLC	±																																																																																																																																																																																																																																																																																																																
48	PVC	±																																																																																																																																																																																																																																																																																																																
49	PLC	±																																																																																																																																																																																																																																																																																																																
50	PVC	±																																																																																																																																																																																																																																																																																																																
51	PLC	±																																																																																																																																																																																																																																																																																																																
52	PVC	±																																																																																																																																																																																																																																																																																																																
53	PLC	±																																																																																																																																																																																																																																																																																																																
54	PVC	±																																																																																																																																																																																																																																																																																																																
55	PLC	±																																																																																																																																																																																																																																																																																																																
56	PVC	±																																																																																																																																																																																																																																																																																																																
57	PLC	±																																																																																																																																																																																																																																																																																																																
58	PVC	±																																																																																																																																																																																																																																																																																																																
59	PLC	±																																																																																																																																																																																																																																																																																																																
60	PVC	±																																																																																																																																																																																																																																																																																																																
61	PLC	±																																																																																																																																																																																																																																																																																																																
62	PVC	±																																																																																																																																																																																																																																																																																																																
63	PLC	±																																																																																																																																																																																																																																																																																																																
64	PVC	±																																																																																																																																																																																																																																																																																																																
65	PLC	±																																																																																																																																																																																																																																																																																																																
66	PVC	±																																																																																																																																																																																																																																																																																																																
67	PLC	±																																																																																																																																																																																																																																																																																																																
68	PVC	±																																																																																																																																																																																																																																																																																																																
69	PLC	±																																																																																																																																																																																																																																																																																																																
70	PVC	±																																																																																																																																																																																																																																																																																																																
71	PLC	±																																																																																																																																																																																																																																																																																																																
72	PVC	±																																																																																																																																																																																																																																																																																																																
73	PLC	±																																																																																																																																																																																																																																																																																																																
74	PVC	±																																																																																																																																																																																																																																																																																																																
75	PLC	±																																																																																																																																																																																																																																																																																																																
76	PVC	±																																																																																																																																																																																																																																																																																																																
77	PLC	±																																																																																																																																																																																																																																																																																																																
78	PVC	±																																																																																																																																																																																																																																																																																																																
79	PLC	±																																																																																																																																																																																																																																																																																																																
80	PVC	±																																																																																																																																																																																																																																																																																																																
81	PLC	±																																																																																																																																																																																																																																																																																																																
82	PVC	±																																																																																																																																																																																																																																																																																																																
83	PLC	±																																																																																																																																																																																																																																																																																																																
84	PVC	±																																																																																																																																																																																																																																																																																																																
85	PLC	±																																																																																																																																																																																																																																																																																																																
86	PVC	±																																																																																																																																																																																																																																																																																																																
87	PLC	±																																																																																																																																																																																																																																																																																																																
88	PVC	±																																																																																																																																																																																																																																																																																																																
89	PLC	±																																																																																																																																																																																																																																																																																																																
90	PVC	±																																																																																																																																																																																																																																																																																																																
91	PLC	±																																																																																																																																																																																																																																																																																																																
92	PVC	±																																																																																																																																																																																																																																																																																																																
93	PLC	±																																																																																																																																																																																																																																																																																																																
94	PVC	±																																																																																																																																																																																																																																																																																																																
95	PLC	±																																																																																																																																																																																																																																																																																																																
96	PVC	±																																																																																																																																																																																																																																																																																																																
97	PLC	±																																																																																																																																																																																																																																																																																																																
98	PVC	±																																																																																																																																																																																																																																																																																																																
99	PLC	±																																																																																																																																																																																																																																																																																																																
100	PVC	±																																																																																																																																																																																																																																																																																																																
MATERIAL CuSn6P	FINISH -	APPLICATION SPEC -	WEIGHT -	CUSTOMER DRAWING	SCALE 4.000 SHEET 1 OF 1 REV F																																																																																																																																																																																																																																																																																																													